



SEEDBURO SAMPLE CONTAINERS AND PANS

QUART AND PINT SAMPLE BOTTLES

Seedburo's Quart and Pint Sample Bottles are made of a durable polyethylene. Includes an enameled plastic screw-top cap that has a gasket insert to provide an air-tight seal. The No. 630 Quart Bottle meets the specifications of the USDA/ GIPSA (FGIS) for official inspection. Both units feature a 1 3/4" neck opening to accommodate an optional No. 10 rubber stopper with opening for a glass thermometer.

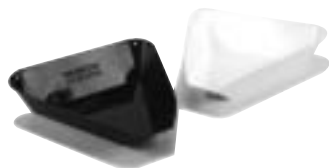
Quart Sample Bottle, 3 3/4" L x 3 3/4" W x 7" H	No. 630
Pint Sample Bottle, 2 3/4" Dia x 6" H	No. 635
Rubber Stopper (for No. 630 and No. 635)	No. 10
Seedburo Easy-Reading Thermometer, 0-120°, 1° divisions	No. 208



HALF GALLON AND GALLON CONTAINERS

Our Half Gallon and Gallon Containers are made of a durable, high density polyethylene. The 5095 Half Gallon Container features an air-tight, snap-on lid. Commonly used in inspection offices and laboratories, they are great for "stackable" storage. Both containers also available with screw-top plastic cap.

Half Gallon Square Container, Snap-On Lid, 5" L x 5" W x 6 3/4" H	No. 5095
Half Gallon Container, Screw-Top Cap, 5" L x 5" W x 6 1/2" H	No. 625
Half Gallon Round Container with Snap-on Lid, 6" dia. x 5 3/4" H	No. 645
Gallon Container, 6" Dia x 10" H with 3 3/4" neck opening	No. 640



TRIANGULAR SAMPLE PANS

The No. 64 Sample Pan is made of tin and has an enameled, dark blue color. This pan is a government standard and features a tapered pour spout. The No. 64P is the same pan made of durable, white, static resistant plastic.

Blue Tin Triangular Sample Pan, 10" L x 10" W x 2 1/2" H	No. 64
White Plastic Triangular Sample Pan, 10" L x 10" W x 2 1/2" H	No. 64P



SPOUTED SAMPLE PANS

These pans are made of aluminum and are ideal for controlled pouring of samples. The No. 33 and No. 31 feature a funnel-type pour spout.

Spouted Sample Pan, 1 1/2 Quart (12 1/2" L x 8 3/4" W x 1 1/2" H)	No. 33
Spouted Sample Pan, 3 Quart (16" L x 12" W x 2" H)	No. 31
Mini-Tin Pan (7" L x 5" W x 7/8" H)	No. 7



ROUND SAMPLE PANS

The 44-6 sample pan is made of heavy gauge tin, all others are light weight aluminum and are available in the following sizes:

Round Aluminum Sample Pan (Pkg/12) - 4 1/2" Dia x 1" H	No. 44
Round Sample Pan, 2 qt liquid (1.7 qt dry) - 8" Dia x 2 3/4" H	No. 44-2
Round Sample Pan, 4 qt liquid (3.4 qt dry) - 9 1/4" Dia x 2-7/8" H	No. 44-4
Round Sample Pan, 6 qt liquid (5.1 qt dry) - 11" Dia x 3 1/2" H	No. 44-6



SEEDBURO ANTI-STATIC WEIGH BOATS

These durable, lightweight weigh boats are ideal for use with digital balances or small weighing applications. Resist temperatures to 200°F and flex for easy pouring. Rubberized polystyrene with anti-static properties. Designed with shallow shape and flat bottom to resist tipping. Sold in packages of 50 each.

Small Weigh Boat (1 3/4" L x 1 3/4" W x 3/8" D)	No. 1420S
Medium Weigh Boat (3 1/4" L x 3 1/4" W x 1" D)	No. 1420M
Large Weigh Boat (5 1/2" L x 5 1/2" W x 7/8" D)	No. 1420L